



# VAIS TECHNOLOGY

[www.vaistech.com](http://www.vaistech.com)

## iVIC-6DR A/V Sources Manual



---

**Model: iVIC-6DR**

for 6 Generation of Toyota/Lexus Navigation System

**in Vehicle Infotainment Center**

---

• LEXUS • TOYOTA •

** IMPORTANT PLEASE READ!**** WARNING**

**VAIS TECHNOLOGY SHALL NOT BE LIABLE FOR ANY SPECIAL, DIRECT, INDIRECT OR CONSEQUENTIAL DAMAGES OR DAMAGES TO PERSONS OR PROPERTY ARISING OUT OF THE USE OF THE PRODUCT, OR FOR ANY LOSS OF BUSINESS OR PROFITS, EVEN IF VAIS TECHNOLOGY HAS BEEN ADVISED OF THE POSSIBILITY OF SUCH DAMAGES. VAIS TECHNOLOGY'S LIABILITY FOR BREACH OF WARRANTY SHALL NOT EXCEED THE PURCHASE PRICE OF THE PRODUCT, NOTWITHSTANDING ANY FAILURE OF THE ESSENTIAL PURPOSE OF ANY LIMITED REMEDY.**

**DRIVERS OF THE VEHICLE ARE SOLELY RESPONSIBLE FOR THE SAFE OPERATION OF THE VEHICLE AND THE SAFETY OF YOU AND YOUR PASSENGERS. FOR SAFETY PURPOSES, THE FUNCTIONALITY OF THIS PRODUCT SHOULD NOT BE USED WHILE THE VEHICLE IS BEING DRIVEN. SUCH USE COULD BE A DISTRACTION TO THE DRIVER, WHICH COULD CAUSE AN ACCIDENT LEADING TO SERIOUS INJURY OR DEATH.**

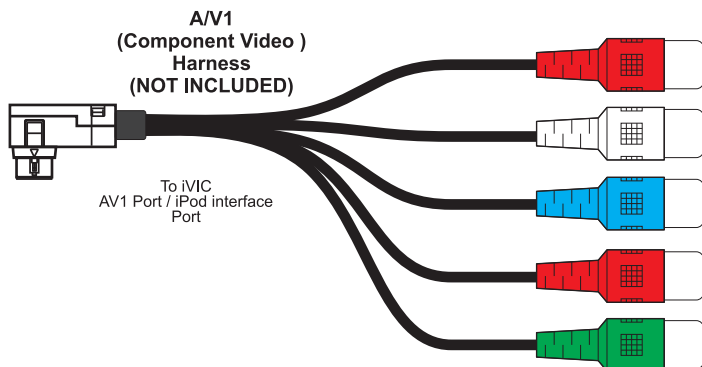
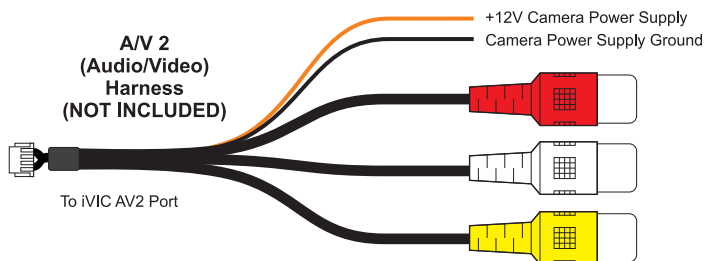
**SOME STATES/PROVINCES OR OTHER GOVERNMENTAL JURISDICTIONS (SUCH AS CITIES) MAY HAVE LAWS THAT PROHIBIT THE OPERATION OF A VIDEO SCREEN WITHIN THE SIGHT OF THE DRIVER. YOU SHOULD USE THE PRODUCT ONLY IN LOCATIONS WHERE IT IS LEGAL TO DO SO. ALTHOUGH VAIS TECHNOLOGY STRONGLY RECOMMENDS THAT THE FUNCTIONALITY OF THIS PRODUCT NOT BE USED AT ANY TIME WHILE THE VEHICLE IS IN MOTION, IT IS YOUR RESPONSIBILITY TO DETERMINE WHETHER THE PRODUCT CAN BE LEGALLY USED IN ANY GIVEN LOCATION. ANY USE OF THE PRODUCT IN ANY LOCATION WHERE IT IS ILLEGAL TO DO SO MAY PROHIBIT YOU FROM RECOVERING DAMAGES IN THE EVENT OF AN ACCIDENT OR MAY BE USEABLE AGAINST YOU AS EVIDENCE OF NEGLIGENCE.**

** WARNING**

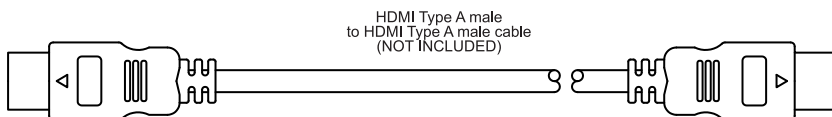
**DRIVE SAFELY AND FOLLOW TRAFFIC RULES.**

**VAIS TECHNOLOGY AND/OR ITS OWNERS/EMPLOYEES/SHAREHOLDERS/SUPPLIERS SHALL NOT BE HELD RESPONSIBLE FOR ANY USE OF THIS PRODUCT OR ANY DIRECT AND INDIRECT CONSEQUENCES THEREOF. WATCHING THIS SCREEN AND MAKING SELECTIONS WHILE DRIVING CAN CAUSE A SERIOUS ACCIDENT, DAMAGE, OR BREAK THE LAW.**

**IF YOU USE THIS PRODUCT IN YOUR VEHICLE, IT IS YOUR RESPONSIBILITY TO MAKE YOUR PASSENGERS AWARE OF THE ABOVE WARNING.**



If Composite is selected in A/V1 source as Input Signal Type, then you must use Green connector for Composite Video



iVIC screen will be displayed when you start the car. If you turn your car off with iVIC Video Graphics Mode active, turning the car on will resume iVIC display.

**Exception:** If reverse gear was activated shortly after the vehicle start up, switching gear to DRIVE will activate MAP screen.

To activate Video Graphics Screen push [AUDIO] button.



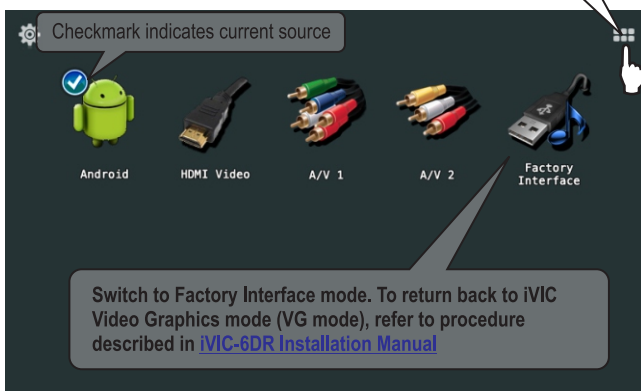
VAIS Technology safety message is displayed for 5 seconds. After 5 seconds you can touch the screen to go to Video Graphics menu.

After 5 more seconds safety message will go off.

Touch the screen to get to the iVIC side "Source Menu".

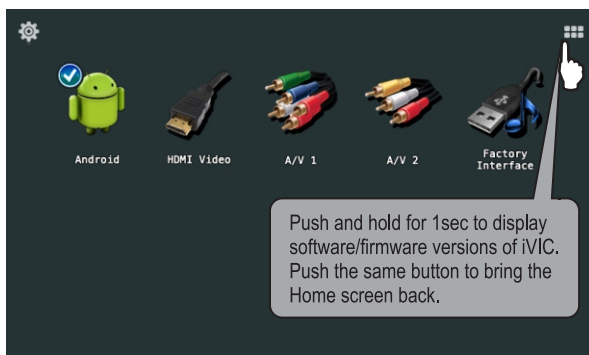
## Source Selection (Home Screen)

Touch [HOME SCREEN SETUP MODE] icon to enable or disable Sources.

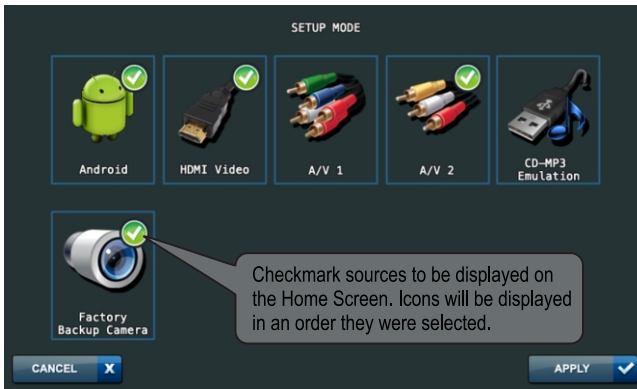


Touch the icon to select desired source.

## How to check iVIC Software/Firmware version

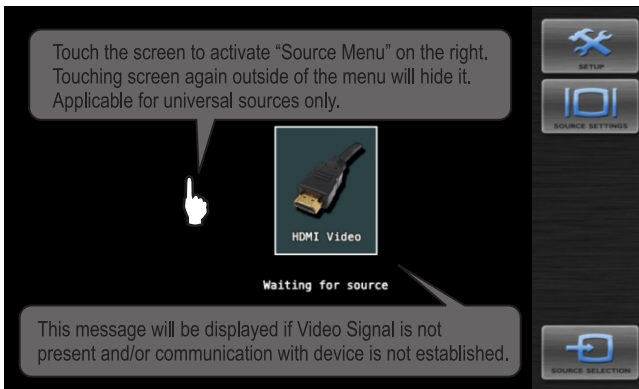


## Source "SETUP MODE"



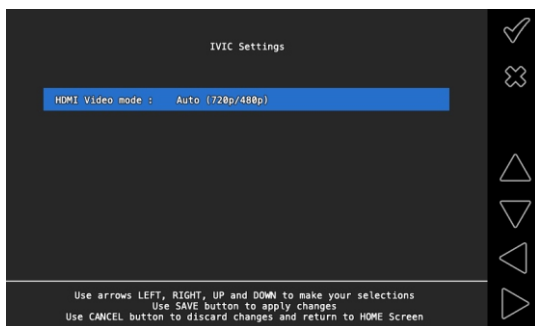
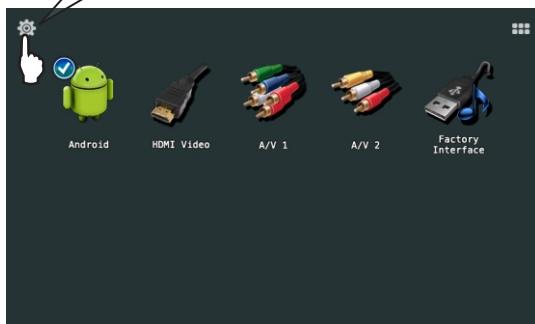
"Factory Backup Camera" source activates factory backup camera. Available only if backup camera was previously activated at least once using "Reverse gear" after vehicle startup. This functionality may not be available for all vehicle models.

## Source "SETTINGS"



## HDMI Video Mode Selection (480p, 720p, Auto)

Touch [iVIC SETTINGS] icon to select HDMI Video Mode.

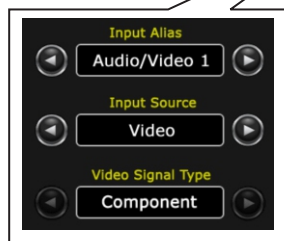


HDMI Video Mode Selection is applicable for Android and HDMI Video only.

Three Options are available:

- 480p** Native mode. No vertical scaling used, may cause some gray/black area around actual image. Gray/Black areas depend on HDMI Video source connected, iVIC has no control over those areas.
- 720p** This mode uses both vertical and horizontal scaling.
- AUTO (720p/480p)** Depending on Video Source connected, iVIC switches between 720p and 480p, 720p being the first choice.

## Audio/Video 1 Source Setup



**Input Alias** - Choose from the following (Audio/Video 1, AV Player, DVD, Game Console)

**Input Source** - is a Component A/V Source. It can be used for either iPod (iPod App Mode) or as a Universal Component Audio/Video Source.

**Video Signal Type** - Component is standard

## ⚠ ATTENTION

In order to use iPod App Mode functionality (if applicable) you need to have iPod Interface cable from VAIS Technology

(Sold Separately)

## Audio/Video 2 Source Setup



**A/V2 harness required for video playback (sold separately)**

**Input Alias** - Choose from the following (Audio/Video 1, AV Player, DVD, Game Console)

**Input Source** - Select Input Source for Audio/Video 2. Can be chosen as <Video> - Audio/Video Universal composite source, or <Camera>.

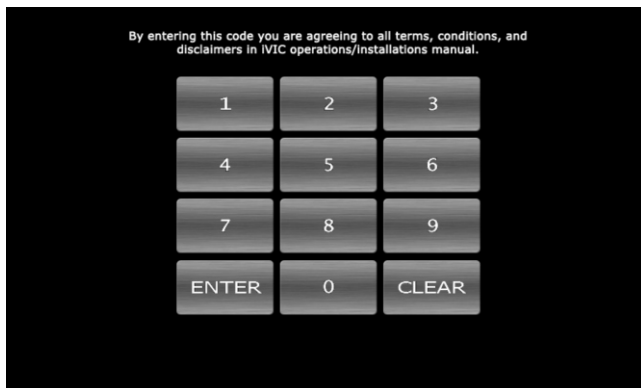
Universal Audio/Video source operation depends on the parking brake. With parking brake not engaged Code request will come up, see page 17 for details. With parking brake engaged iVIC will switch to video source.

Camera operation does not depend on the parking brake. With Camera Input Source selected, Audio is disabled.

If camera selected as input source iVIC provides 12V DC as the power supply for the camera (if equipped).

**Video Signal Type** - Composite (can not be changed)

With parking brake not engaged, Code request will come up, see screen below.  
With parking brake engaged, iVIC will display selected video source.



#### About "Video Unlock" Function (operable while in motion)

In order to unlock video playback while in motion feature you need to enter Code 2486.

#### **i IMPORTANT PLEASE READ!**

**DRIVE SAFELY AND FOLLOW TRAFFIC RULES.**

**VAIS TECHNOLOGY AND/OR ITS OWNERS/EMPLOYEES/SHAREHOLDERS/SUPPLIERS SHALL NOT BE HELD RESPONSIBLE FOR ANY USE OF THIS PRODUCT OR ANY DIRECT AND INDIRECT CONSEQUENCES THEREOF. WATCHING THIS SCREEN AND MAKING SELECTIONS WHILE DRIVING CAN CAUSE A SERIOUS ACCIDENT, DAMAGE, OR BREAK THE LAW.**

**IF YOU USE THIS PRODUCT IN YOUR VEHICLE, IT IS YOUR RESPONSIBILITY TO MAKE YOUR PASSENGERS AWARE OF THE ABOVE WARNING.**